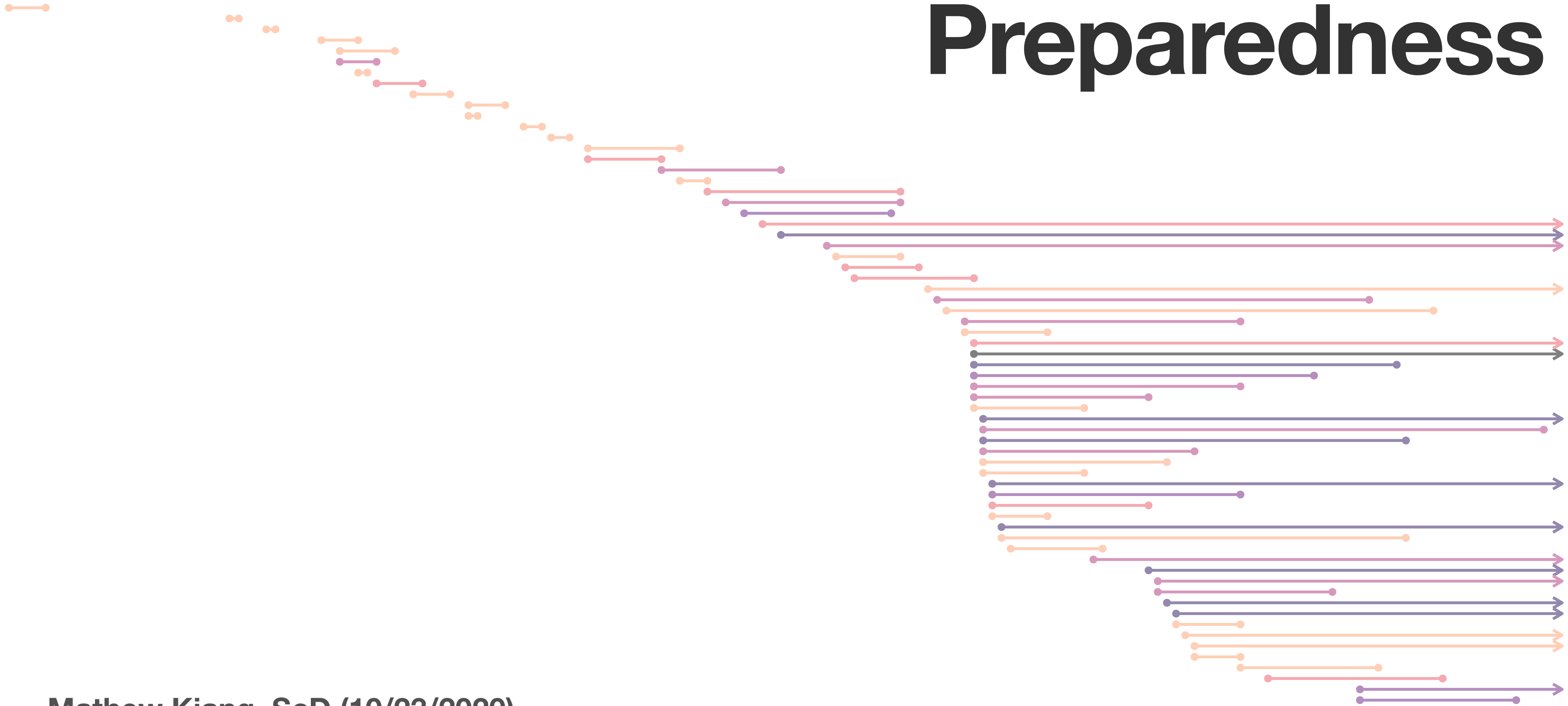
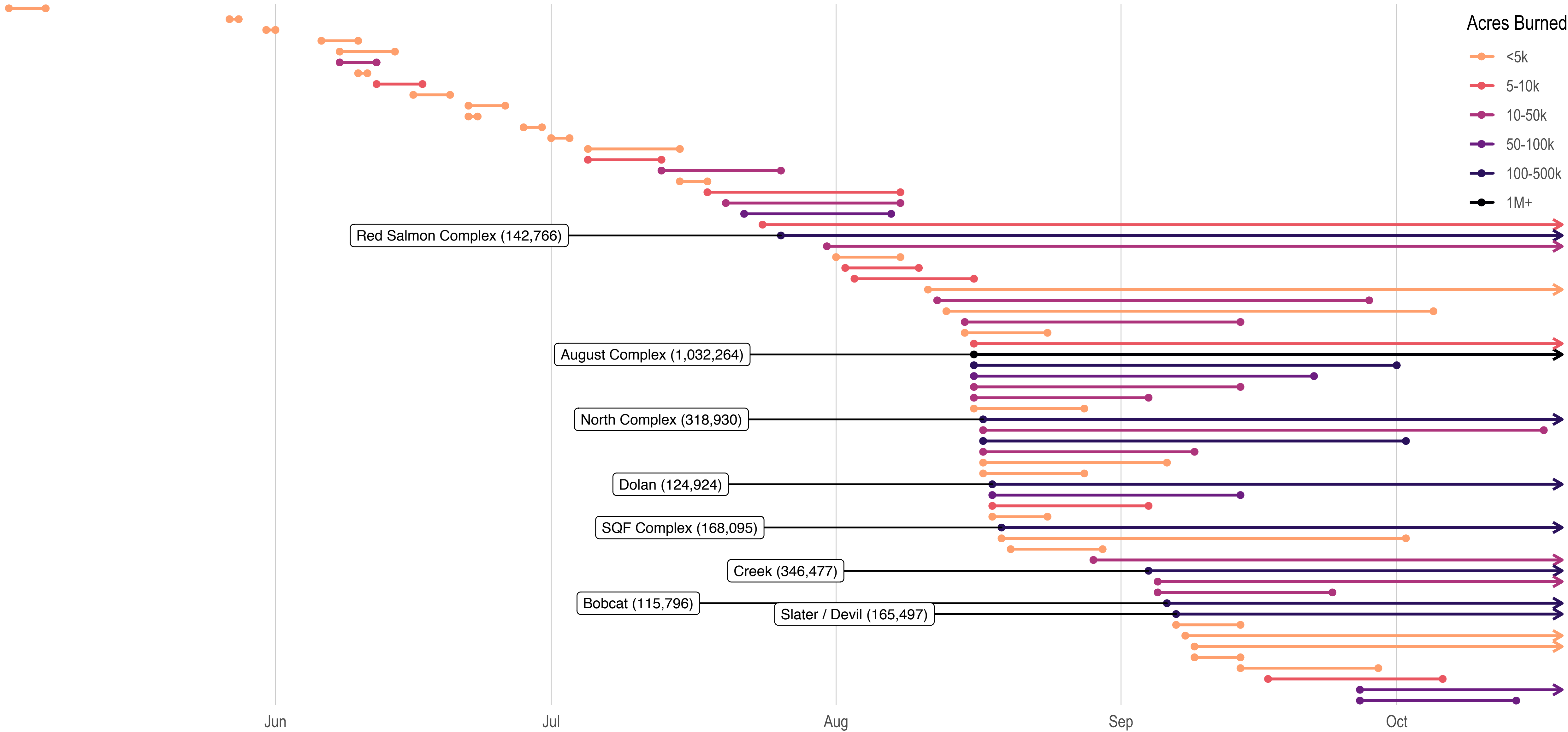


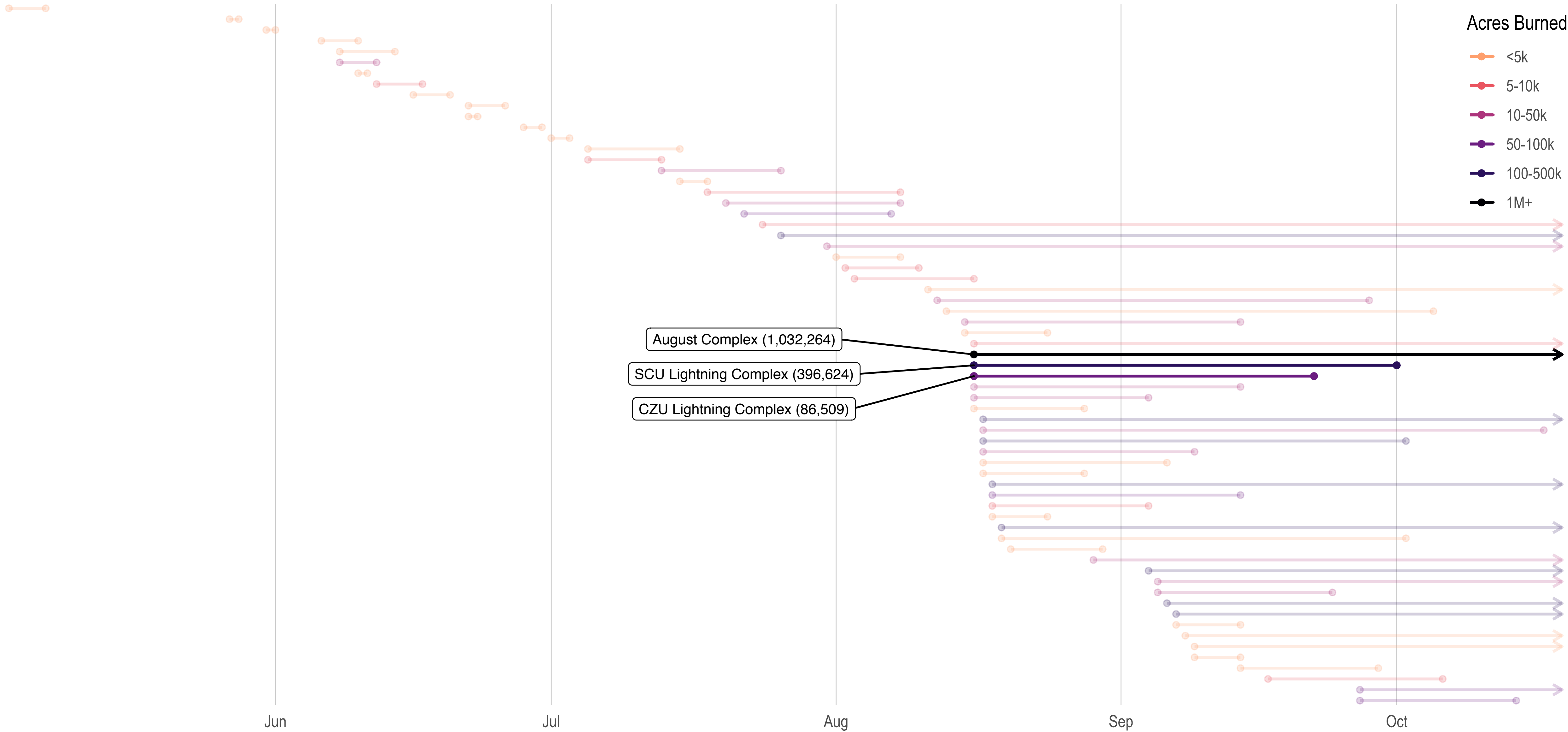
Crisis Ready: California Wildfires Preparedness



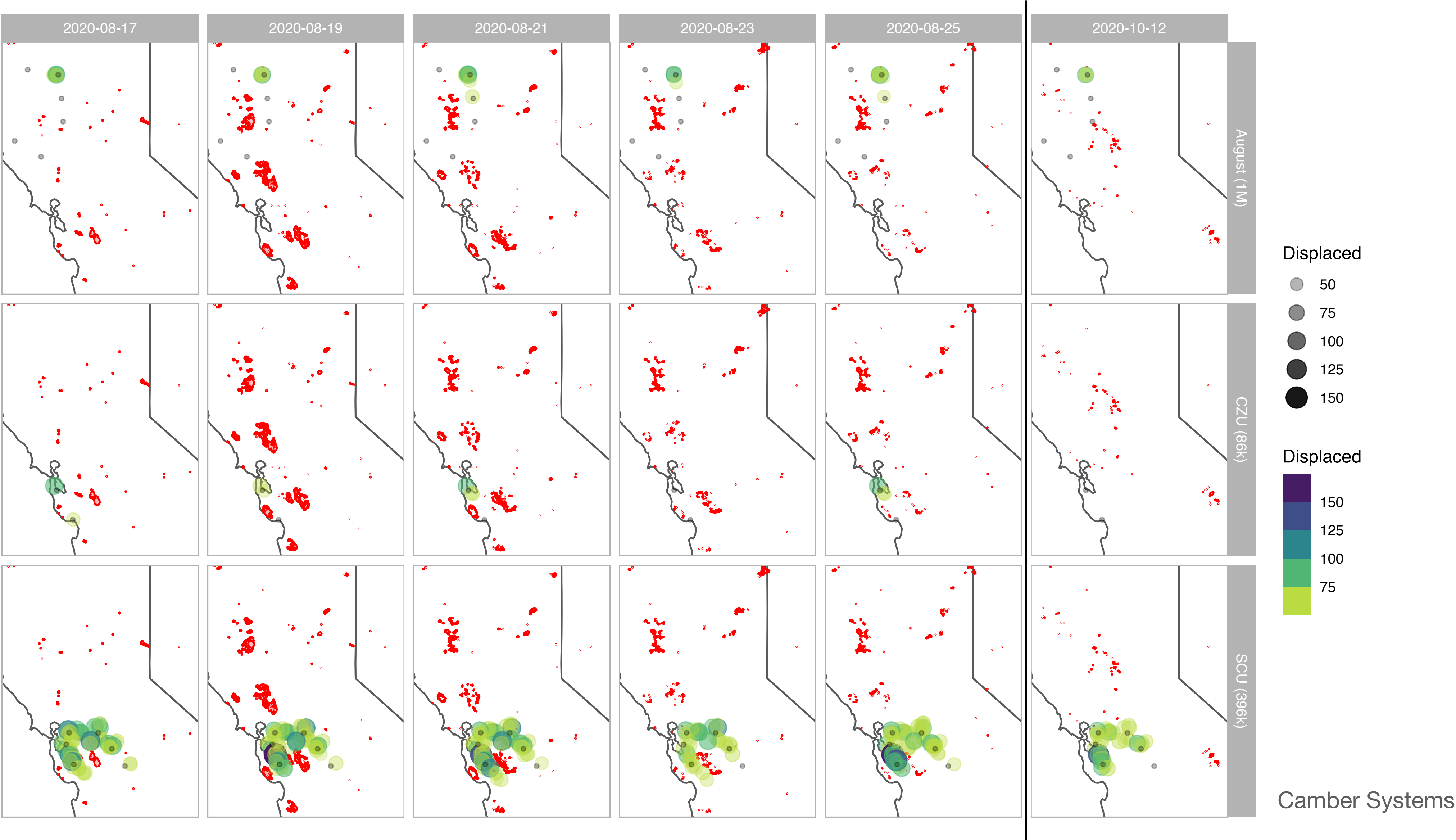
California Fires in 2020



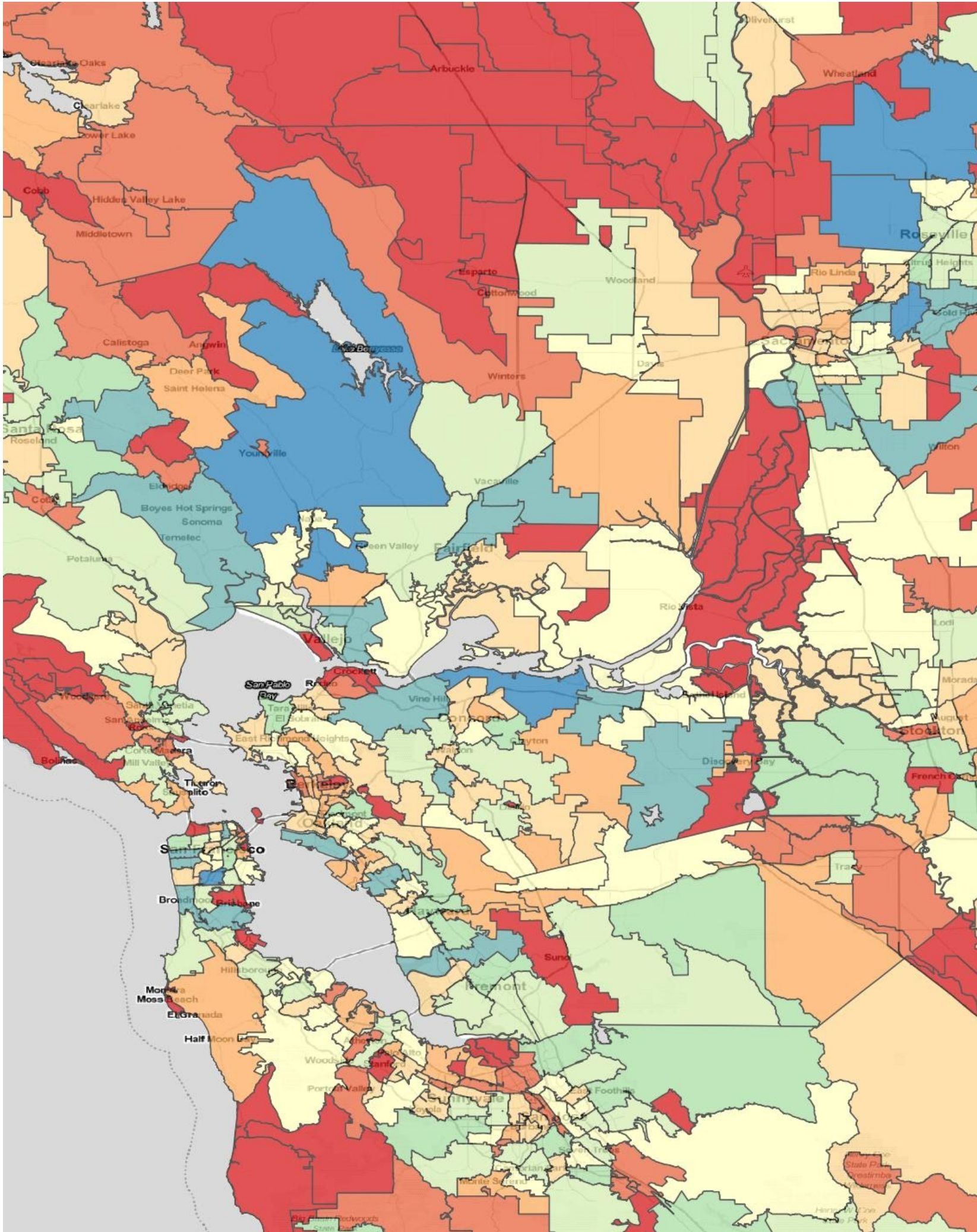
California Fires in 2020



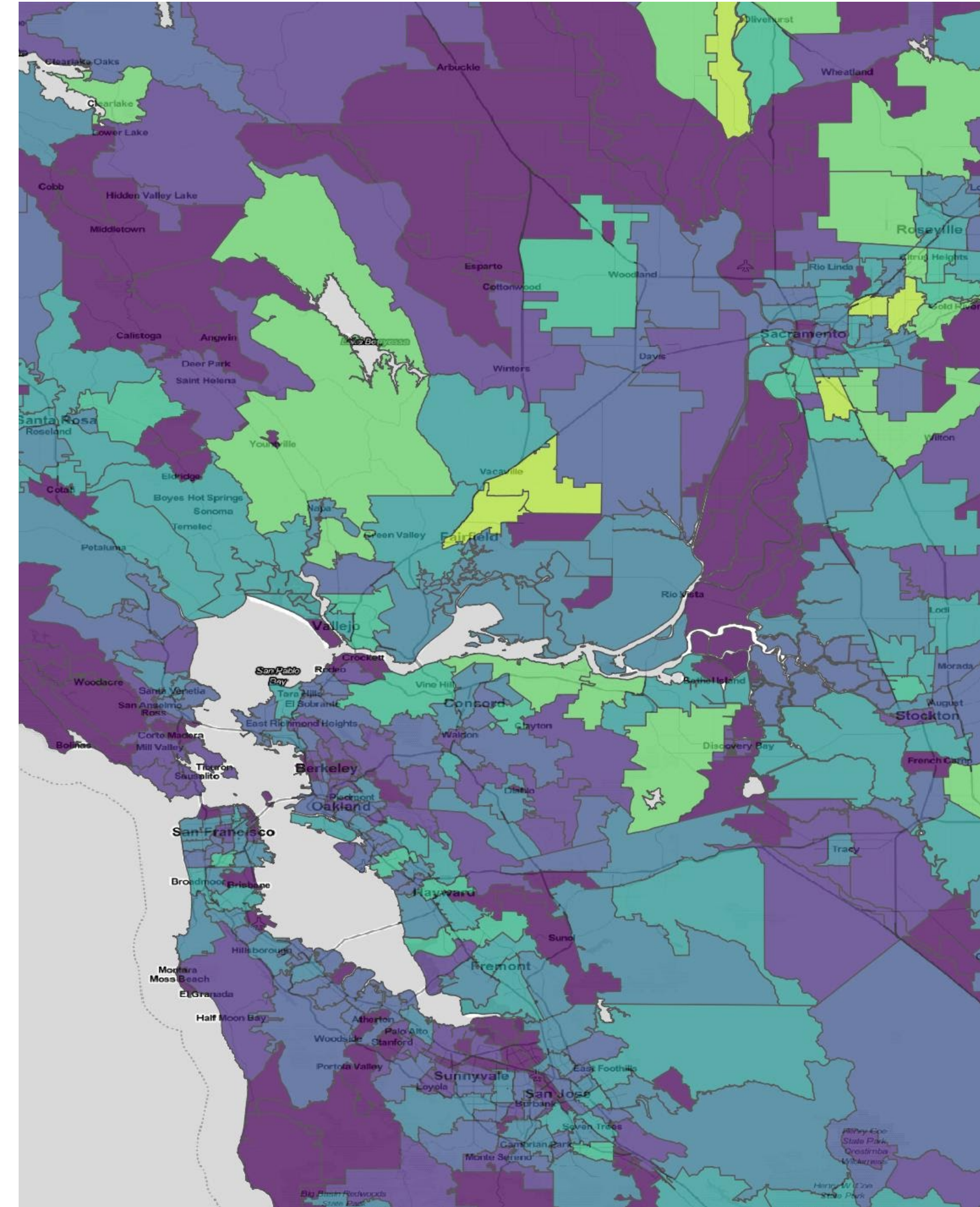
Where are people going?



Where are medically vulnerable people?

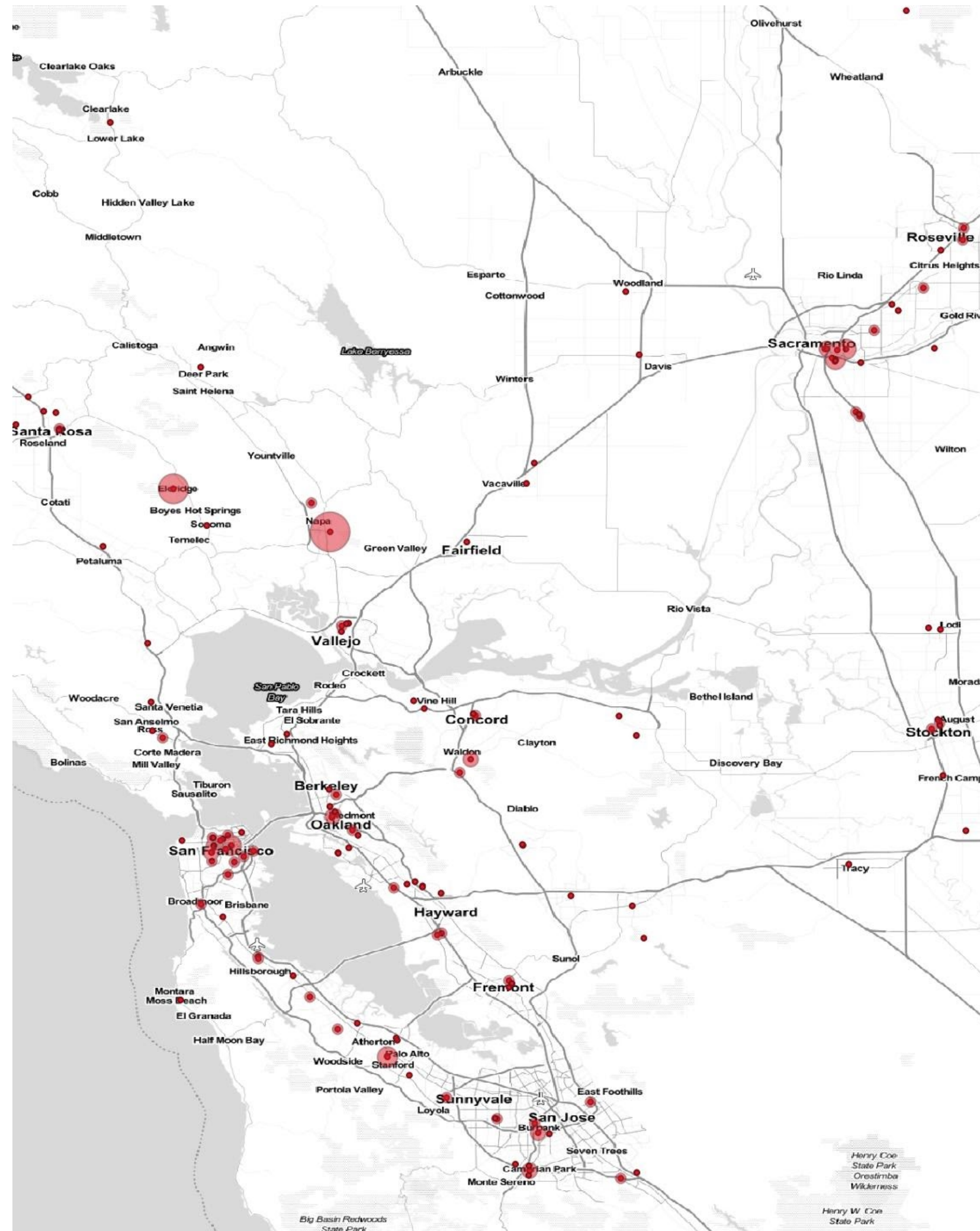


Number of Medicare beneficiaries

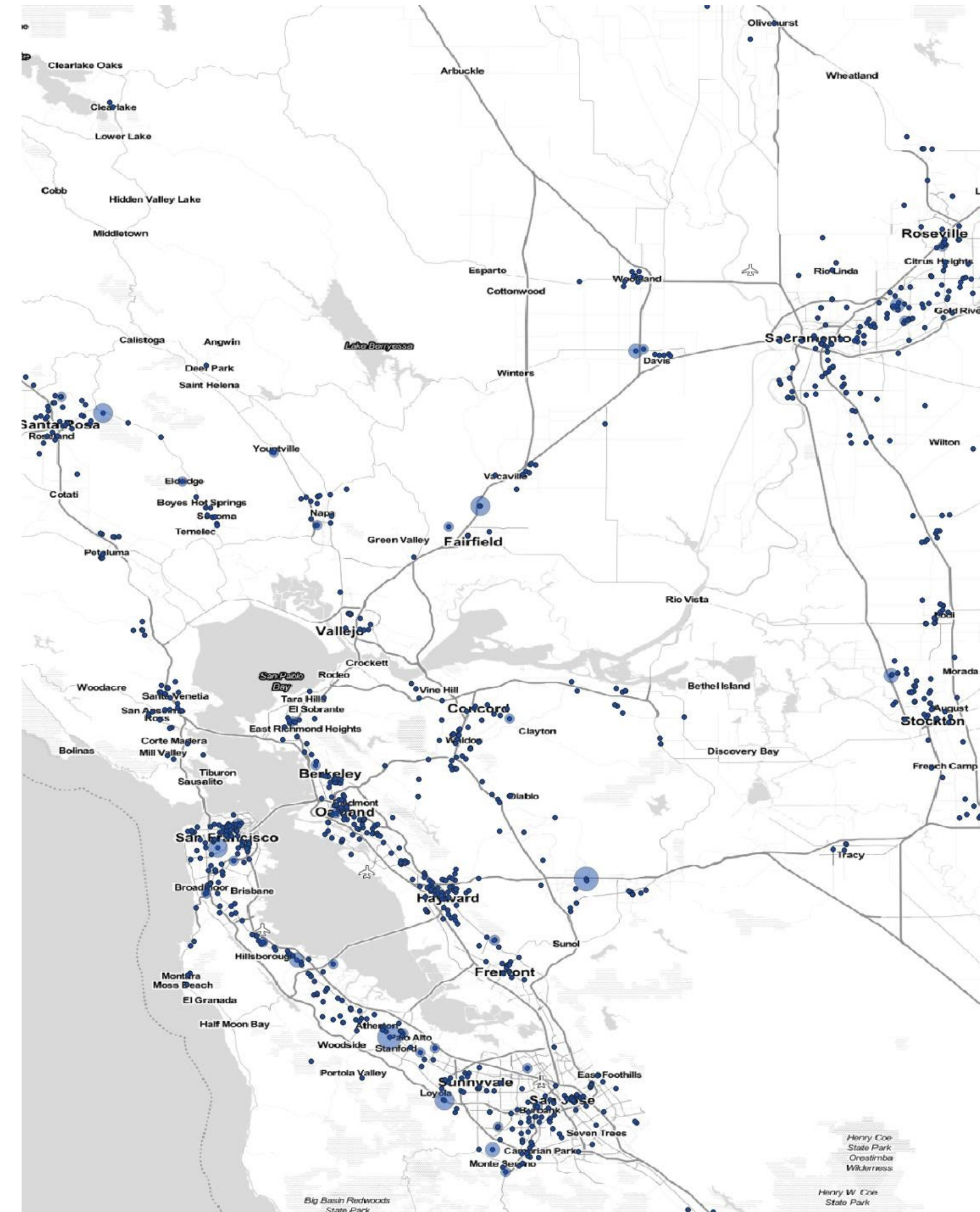


Number of Medicare beneficiaries with electricity-dependent durable medical equipment

Where are important facilities?



Hospital locations (capacity)



Nursing home locations (capacity)

Next questions

Next questions

- What are the needs of those affected by wildfires? What is the on-the-ground experience of those running medical clinics and FHQCs? (Qualitative study starting soon.)

Next questions

- What are the needs of those affected by wildfires? What is the on-the-ground experience of those running medical clinics and FHQCs? (Qualitative study starting soon.)
- What are the mobility dynamics of wildfires and associated evacuations? How do they compare to other natural disasters?

Next questions

- What are the needs of those affected by wildfires? What is the on-the-ground experience of those running medical clinics and FHQCs? (Qualitative study starting soon.)
- What are the mobility dynamics of wildfires and associated evacuations? How do they compare to other natural disasters?
- What makes evacuation orders and PSPS warnings more (or less) effective?

Next questions

- What are the needs of those affected by wildfires? What is the on-the-ground experience of those running medical clinics and FHQCs? (Qualitative study starting soon.)
- What are the mobility dynamics of wildfires and associated evacuations? How do they compare to other natural disasters?
- What makes evacuation orders and PSPS warnings more (or less) effective?
- Can we predict shelter placement and capacity (e.g., Red Cross) based on mobility and wildfire characteristics?

Next questions

- What are the needs of those affected by wildfires? What is the on-the-ground experience of those running medical clinics and FHQCs? (Qualitative study starting soon.)
- What are the mobility dynamics of wildfires and associated evacuations? How do they compare to other natural disasters?
- What makes evacuation orders and PSPS warnings more (or less) effective?
- Can we predict shelter placement and capacity (e.g., Red Cross) based on mobility and wildfire characteristics?
- Can we predict medical needs and surges?

We are hiring!

<https://crisisready.io/open-positions/>